

Amity Township
2004 Weaverstown Rd
Douglassville 19518

RESOLUTION NO. 10-12

1813MU10

A RESOLUTION OF THE TOWNSHIP OF AMITY, BERKS COUNTY, PENNSYLVANIA, ACCEPTING INTO THE TOWNSHIP ROAD OR HIGHWAY SYSTEM PLEASANT VIEW DRIVE, WOODS EDGE DRIVE, FARM VIEW COURT, TIMBERLINE DRIVE AND MISCELLANEOUS SEWER AND DRAINAGE EASEMENTS LOCATED IN THE "WOODS EDGE - PHASE 3A", SITUATE IN AMITY TOWNSHIP, BERKS COUNTY, PENNSYLVANIA, AS LAID OUT AND DEDICATED TO PUBLIC USE BY DEED OF DEDICATION DATED NOVEMBER 1, 2010

WHEREAS, Section 2316 of the Act of May 1, 1933, P.L. 103, No. 69, as reenacted and amended November 9, 1995, P.L. 350, No. 60, 53 P.S. § 67316, et seq., provides that land dedicated to a municipality for use as a road, street or alley may be accepted by Resolution in the name of the Township, duly enacted by the Supervisors of said Township; and

WHEREAS, FIORINO GRANDE t/d/b/a GRANDE CONSTRUCTION COMPANY by Deed of Dedication dated November 1, 2010, dedicated to the Township of Amity, its successors and assigns, forever, as and for public roads, Pleasant View Drive, Woods Edge Drive, Farm View Court and Timberline Drive, together with miscellaneous sewer and drainage easements, within the Development known as Phase 3A of "Woods Edge", situate in Amity Township, Berks County, Pennsylvania, in accordance with the Final Subdivision Plan known as "Woods Edge Subdivision - Phase 3A", recorded in the Recorder of Deeds Office of Berks County, Pennsylvania, in Plan Book Volume 262, page 0053; and

WHEREAS, it is the intention of the Township of Amity, Berks County, Pennsylvania to accept the Deed of Dedication.

NOW, THEREFORE, IT IS HEREBY RESOLVED by the Board of Supervisors of the Township of Amity, Berks County, Pennsylvania that the Township of Amity hereby accepts for itself, its successors and assigns, forever, as and for public roads and streets, and for public use and travel, Pleasant View Drive, Woods Edge Drive, Farm View Court, and Timberline Drive together with miscellaneous sewer and drainage easements, within the Development known as "Woods Edge - Phase 3A", situate in Amity Township, Berks County, Pennsylvania, in accordance with the Final Subdivision Plan known as "Woods Edge Subdivision - Phase 3A" recorded in the Recorder of Deeds Office of Berks County, Pennsylvania, as more particularly described in the descriptions attached hereto, marked Exhibits "A," "B" and "C" and made a part hereof. These streets are opened and declared to be a part of the public road system of the Township of Amity, Berks County,

CLERK OF COURTS

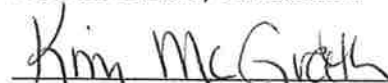
Pennsylvania, its successors and assigns, forever, to be used for the aforesaid purposes, and no other uses or purposes, and accordingly, shall be placed upon the Township Official Map.

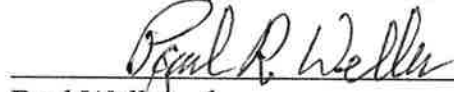
BE IT FURTHER RESOLVED that the said Deed of Dedication may be recorded in the Office of the Recorder of Deeds in and for Berks County, Pennsylvania. In addition, a copy of this Resolution shall be filed with the Office of the Clerk of the Criminal Division of the Court of Common Pleas of Berks County, Pennsylvania.


DULY ADOPTED AND APPROVED this 17th day of November, 2010


BOARD OF SUPERVISORS
TOWNSHIP OF AMITY


Robert Yanos, Chairman


Kim McGrath, Vice Chairman


Paul Weller


Terry Jones


Scott Stepp

Approved this 17th day of November, 2010

I certify that this is a true and correct copy of a Resolution adopted by the Township of Amity, Berks County, Pennsylvania on November 17, 2010.


Secretary

NOV 17 2010

CLERK OF COURTS

EXHIBIT "A"

Descriptions of Roads Dedicated

DEED DESCRIPTION

PLEASANT VIEW DRIVE PHASE 3A

All that certain street (54' wide) known as Pleasant View Drive, situate in Amity Township, Berks County, Pennsylvania as shown on the Final Plans of Woods Edge Phase 3A and being more fully bounded and described as follows to wit:

Beginning at a point on the eastern right of way line of Pleasant View Drive, the terminus of Phase 2b dedication and in line of lot 186;

Thence along lot 186, by a curve to the left, having an initial radius bearing South 54 degrees 10 minutes 08 seconds East, a radius of 273.00', a central angle of 17 degrees 30 minutes 38 seconds and an arc length of 83.43' to a point of tangency;

Thence along lot 186, 187, 188, 189, 190, 191, 192 and 193, South 18 degrees 16 minutes 38 seconds West, 875.66' to a point of curvature;

Thence along lots 193, 194, 195, open space, and lot 196 by a curve to the right, having a radius of 252.00', a central angle of 84 degrees 45 minutes 56 seconds and an arc length of 372.82' to a point of tangency;

Thence along lots 197, 198 and 199, North 76 degrees 57 minutes 26 seconds West, 258.26' to a point of curvature;

Thence along lots 199, 200, 201, 202, 203 and 204, by a curve to the left, having a radius of 873.00', a central angle of 36 degrees 36 minutes 38 seconds and an arc length of 557.82' to a point the terminus of Pleasant View Drive phase 3a;

Thence crossing Pleasant View Drive and along Phase 3b; North 23 degrees 34 minutes 04 seconds West, 54.00' to a point, a corner of lot 297 and a corner of the terminus of Timberline Drive;

Thence along the terminus of Timberline Drive, and lots 299, 300, 301, 302, 303 and 304, by a curve to the right, having an initial radius bearing, South 23 degrees 34 minutes 04 seconds East, a radius of 927.00', a central angle of 36 degrees 36 minutes 38 seconds and an arc length of 592.33' to a point of tangency;

Thence along lots 304, 305 and 306, South 76 degrees 57 minutes 26 East, 258.26' to a point of curvature;

Thence along lots 306 and 307, by a curve to the left, having a radius of 198.00', a central angle of 84 degrees 45 minutes 56 seconds and arc length of 292.93' to a point of tangency;

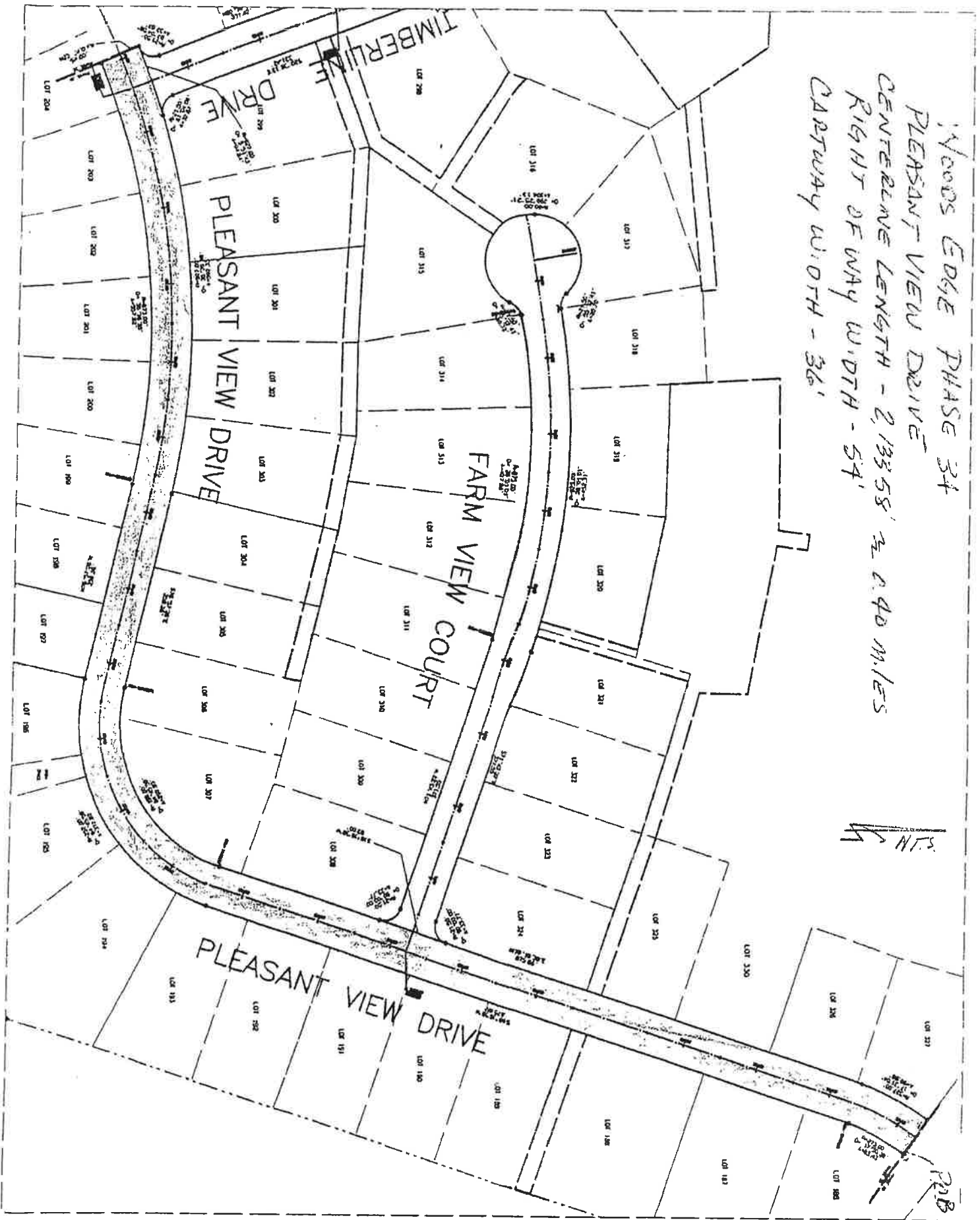
Thence along lots 307, 308, the terminus of Farmview Court, lots 324, 325, 330, 326 and 327, North 18 degrees 16 minutes 38 seconds East, 875.66' to a point of curvature;

Thence along lot 327, by a curve to the right, having a radius of 327.00', a central angle of 17 degrees 31 minutes 04 seconds and an arc length of 99.98' to a point the terminus of phase 2b;

Thence along the terminus of phase 2b, crossing Pleasant View Drive, South 54 degrees 10 minutes 08 seconds East, 54.00' to a point, the place of BEGINNING.

CONTAINING; 115,213 Sq. Ft

WOODS EDGE PHASE 34
PLEASANT VIEW DRIVE
CENTERLINE LENGTH - 2,133.58' ± @ 40 MILES
RIGHT OF WAY WIDTH - 54'
CARTWAY WIDTH - 36'



DEED DESCRIPTION

WOODS EDGE DRIVE PHASE 3A

All that certain street (54' wide) with the improvements therein, known as Woods Edge Drive, situate in Amity Township, Berks County, Pennsylvania as shown on the Final Plans of Woods Edge Phase 3A and being more fully bounded and described as follows to wit:

Beginning at a point on the western right of way line of Timberline Drive, a corner of lot 261;

Thence along lot 261, by a curve to the left, having an initial radius bearing South 69 degrees 21 minutes 47 seconds West, a radius of 21.50', a central angle of 90 degrees 00 minutes 00 seconds and an arc length of 33.77' to a point of tangency;

Thence along lot 261, South 69 degrees 21 minutes 47 seconds West, 73.15' to a point of curvature;

Thence along lots 261 and 262, by a curve to the right having a radius of 527.00', a central angle of 17 degrees 18 minutes 55 seconds and an arc length of 159.26' to a point of tangency;

Thence along lots 262, 263 and 264, South 86 degrees 40 minutes 42 seconds West, 225.04' to a point of curvature;

Thence along lots 264 and 265 by a curve to the left, having a radius of 273.00', a central angle of 26 degrees 42 minutes 42 seconds and an arc length of 127.27' to a point the terminus of Woods Edge Phase 3A,

Thence along Woods Edge Phase 3B, crossing Woods Edge Drive, North 30 degrees 02 minutes 00 seconds West, 54.00' to a point a corner of lot 256;

Thence along lots 256 and 257 by a curve to the right having an initial radius bearing, South 30 degrees 02 minutes 00 seconds East, a radius of 327.00', a central angle of 26 degrees 42 minutes 42 seconds and an arc length of 152.45' to a point of tangency;

Thence along lots 257, 258 and 259, North 86 degrees 40 minutes 42 seconds East, 225.04' to a point of curvature;

Thence along lots 259, 332 and 260, by a curve to the left, having a radius of 473.00', a central angle of 17 degrees 18 minutes 55 seconds and an arc length of 142.94' to a point of tangency;

Thence along lot 260, North 69 degrees 21 minutes 47 seconds East, 73.15' to a point of curvature;

Thence along lot 260, by a curve to the left, having a radius of 21.50', a central angle of 90 degrees 00 minutes 00 seconds and an arc length of 33.77' to a point on the western right of way line of Timberline Drive;

Thence along the western right of way line of Timberline Drive, South 20 degrees 38 minutes 13 seconds East, 97.00' to a point the place of BEGINNING.

CONTAINING: 33,173 Sq. Ft.

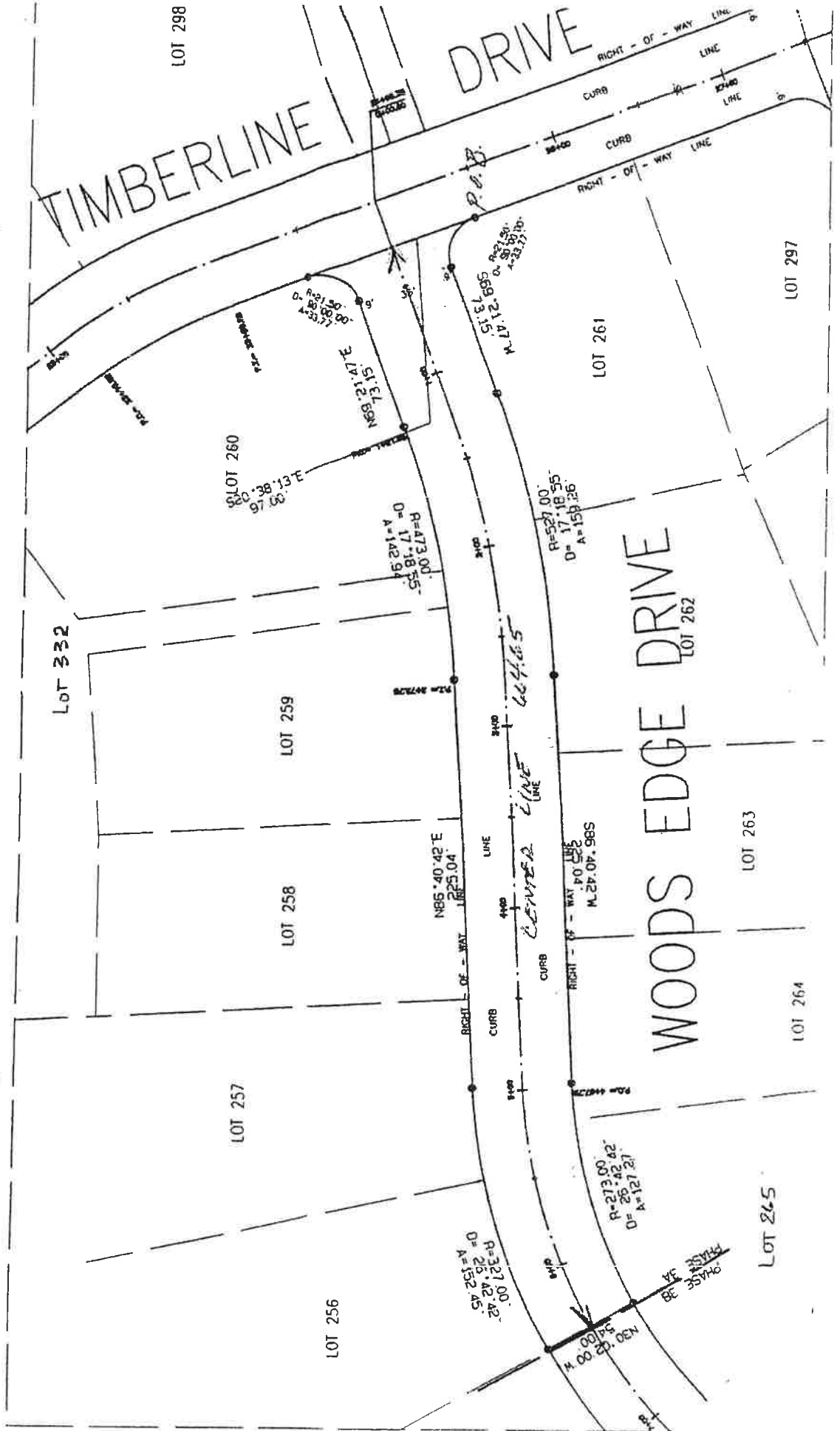
WOODS EDGE PHASE 3A

WOODS EDGE DRIVE

CENTERLINE LENGTH - 664.65' ± 0.126 MILES

RIGHT OF WAY WIDTH - 54'

CANTWAY WIDTH - 36'



DEED DESCRIPTION

FARM VIEW COURT PHASE 3A

All that certain street (50' wide) with the improvements therein, known as Farm View Court, situate in Amity Township, Berks County, Pennsylvania as shown on the Final Plans of Woods Edge Phase 3A and being more fully bounded and described as follows to wit:

Beginning at a point on the western right of way line of Pleasant View Drive, a corner of lot 308;

Thence along lot 308, by a curve to the left, having an initial radius bearing North 71 degrees 43 minutes 22 seconds West, a radius of 21.50', a central angle of 90 degrees 00 minutes 00 seconds and an arc length of 33.77' to a point of tangency;

Thence along lots 308, 309, 310 and 311, North 71 degrees 43 minutes 22 seconds West, 371.55' to a point of curvature;

Thence along lots 311, 312, 313 and 314, by a curve to the left having a radius of 875.00', a central angle of 28 degrees 01 minutes 01 seconds and an arc length of 427.86' to a point of compound curvature;

Thence along lot 315, by a curve to the left, having a radius of 21.50', a central angle of 55 degrees 12 minutes 41 seconds and an arc length of 20.72' to a point of reverse curvature;

Thence along lots 315, 316 and 317, by a curve to the right, having a radius of 60.00', a central angle of 290 degrees 25 minutes 21 seconds and an arc length of 304.13' to a point of reverse curvature;

Thence along lot 317, by a curve to the left, having a radius of 21.50', a central angle of 55 degrees 12 minutes 41 seconds and an arc length of 20.72' to a point of reverse curvature;

Thence along lots 318, 319, 320 and 321, by a curve to the right, having a radius of 925.00', a central angle of 28 degrees 01 minutes 01 seconds and an arc length of 452.31' to a point of tangency;

Thence along lots 321, 322, 323 and 324, South 71 degrees 43 minutes 22 seconds East, 371.55' to a point of curvature;

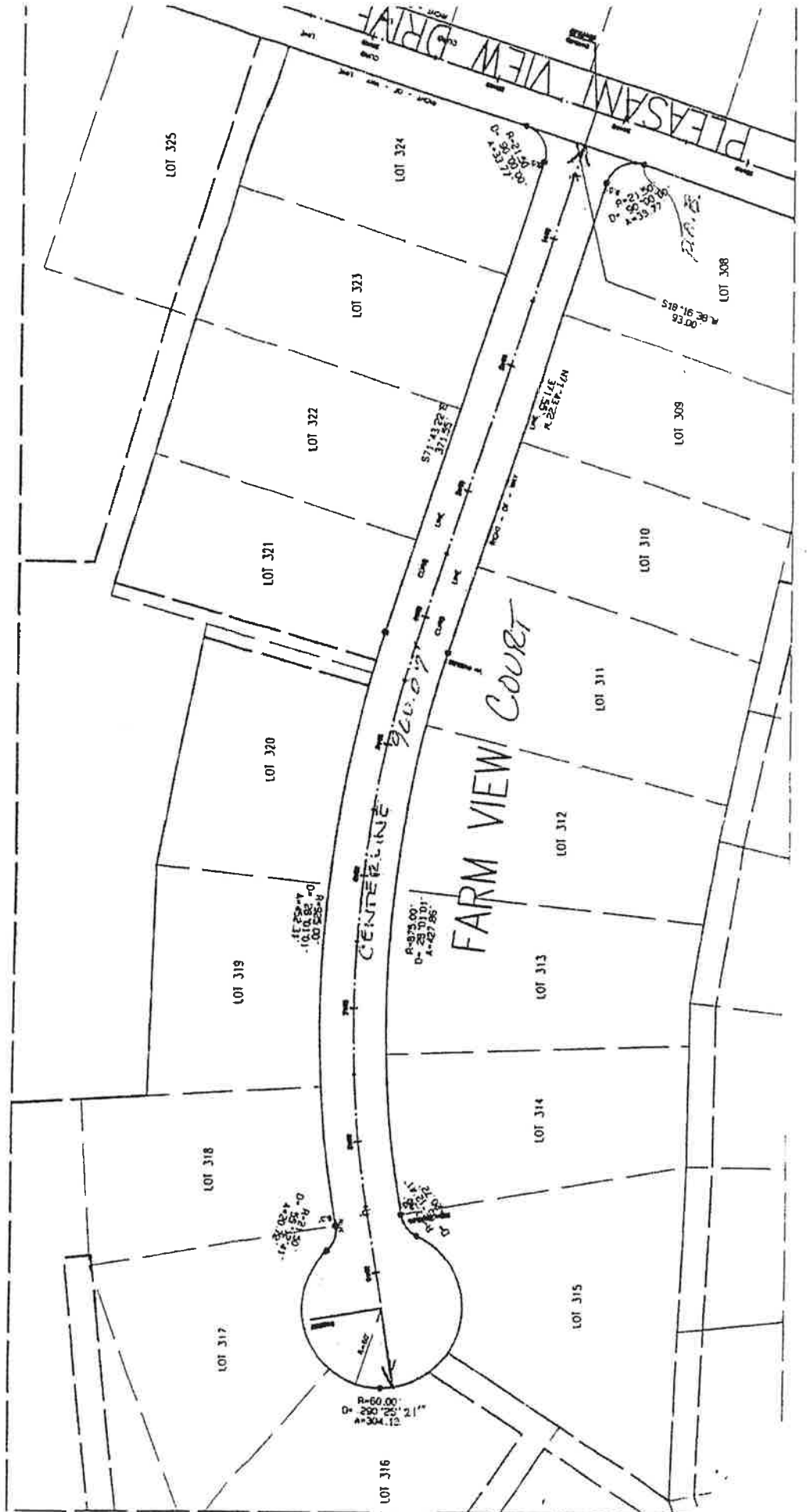
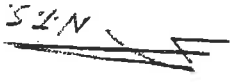
Thence along lot 324, by a curve to the left, having a radius of 21.50', a central angle of 90 degrees 00 minutes 00 seconds and an arc length of 33.77' to a point on the western right of way line of Pleasant View Drive;

Thence along the western right of way line of Pleasant View Drive, South 18 degrees 16 minutes 38 seconds West, 93.00' to a point the place of BEGINNING.

CONTAINING: 53,646 Sq. Ft.

WOODS EDGE PHASE 3A
 FARM VIEW COURT

CENTERLINE LENGTH - 960.07' = 0.18 MILES
 RIGHT OF WAY WIDTH - 50'
 CARTWAY WIDTH - 33'



DEED DESCRIPTION

TIMBERLINE DRIVE PHASE 3A

All that certain street (54' wide) known as Timberline Drive, situate in Amity Township, Berks County, Pennsylvania as shown on the Final Plans of Woods Edge Phase 3A and being more fully bounded and described as follows to wit:

Beginning at a point on the northern right of way line of Timberline Drive, a corner of lot 22 of phase 1 and a corner of open space, said point being the terminus of previously dedicated Timberline Drive phase 1;

Thence along the open space area, and lands to be conveyed to Pennsylvania American Water Co, by a curve to the right, having an initial radius bearing South 15 degrees 11 minutes 29 seconds East, a radius of 327.00', a central angle of 61 degrees 54 minutes 41 seconds and an arc length of 353.34' to a point of tangency;

Thence along lands to be conveyed to Pennsylvania American Water Co., South 43 degrees 16 minutes 48 seconds West, 119.75' to a point of curvature;

Thence along lands to be conveyed to Pa American Water Co., open space area, and lot 330, by a curve to the right, having a radius of 327.00', a central angle of 45 degrees 13 minutes 05 seconds and an arc length of 258.07' to a point of tangency;

Thence along lots 330 and 331, South 01 degrees 56 minutes 17 seconds West, 222.92' to a point of curvature;

Thence along lot 331, by a curve to the left, having a radius of 273.00', a central angle of 39 degrees 37 minutes 22 seconds and an arc length of 188.79' to a point of tangency;

Thence along lot 331, South 37 degrees 41 minutes 04 seconds East, 186.12' to a point of curvature;

Thence lots 331 and 298, by a curve to the right, having a radius of 327.00', a central angle of 17 degrees 02 minutes 51 seconds and an arc length of 97.29' to a point of tangency;

Thence along lots 298 and 299, South 20 degrees 38 minutes 13 East, 331.42' to a point of curvature;

Thence along lot 299, by a curve to the left, having a radius of 21.50', a central angle of 87 degrees 04 minutes 08 seconds and arc length of 32.67' to a point on the northern right of way line of Pleasant View Drive;

Thence along the northern right of way line of Pleasant View Drive, in a westerly direction, by a curve to the left, having an initial radius bearing, South 17 degrees 42 minutes 21 seconds East, a radius of 927.00', a central angle of 05 degrees 51 minutes 43 seconds and an arc length of 94.84' to a point of curvature and a corner of lot 297;

Thence along lot 297, in a northerly direction, by a curve to the left, having an initial radius bearing, North 23 degrees 34 minutes 04 seconds, a radius of 21.50', a central angle of 87 degrees 04 minutes 08 seconds and an arc length of 32.67' to a point of tangency;

Thence along lots, 297, 261, the terminus of Woods Edge Drive, and lot 260, North 20 degrees 38 minutes 13 seconds West, 331.42' to a point of curvature;

Thence along lot 260, by a curve to the left, having a radius of 273.00', a central angle of 17 degrees 02 minutes 51 seconds and an arc length of 81.23' to a point of tangency;

Thence along lots 260 and 332, North 37 degrees 41 minutes 04 seconds West, 186.12' to a point of curvature;

Thence along lot 332, by a curve to the right, having a radius of 327.00', a central angle of 39 degrees 37 minutes 22 seconds and an arc length of 226.14' to a point of tangency;

Thence along lots 332 and 329, North 01 degrees 56 minutes 17 seconds East, 222.92' to a point of curvature;

Thence along lot 329, the three following courses and distances;

1. by a curve to the left, having a radius of 273.00', a central angle of 45 degrees 13 minutes 05 seconds and an arc length of 215.45' to a point of tangency;

2. North 43 degrees 16 minutes 48 seconds West, 119.75' to a point of curvature;

3. by a curve to the left, having a radius of 273.00', a central angle of 56 degrees 10 minutes 17 seconds and an arc length of 267.64' to a point a corner of lot 23 of Phase 1 and the terminus of previously dedicated Timberline Drive;

Thence crossing Timberline Drive along the terminus of phase 1, North 41 degrees 26 minutes 26 seconds East, 61.73' to a point, the place of BEGINNING.

CONTAINING; 93,314 Sq. Ft

WOODS EDGE PHASE 3A
TIMBERLINE DRIVE
CENTERLINE LENGTH -
1751.67' 30.33 miles
RIGHT OF WAY WIDTH - 54'
CARTWAY WIDTH - 36'

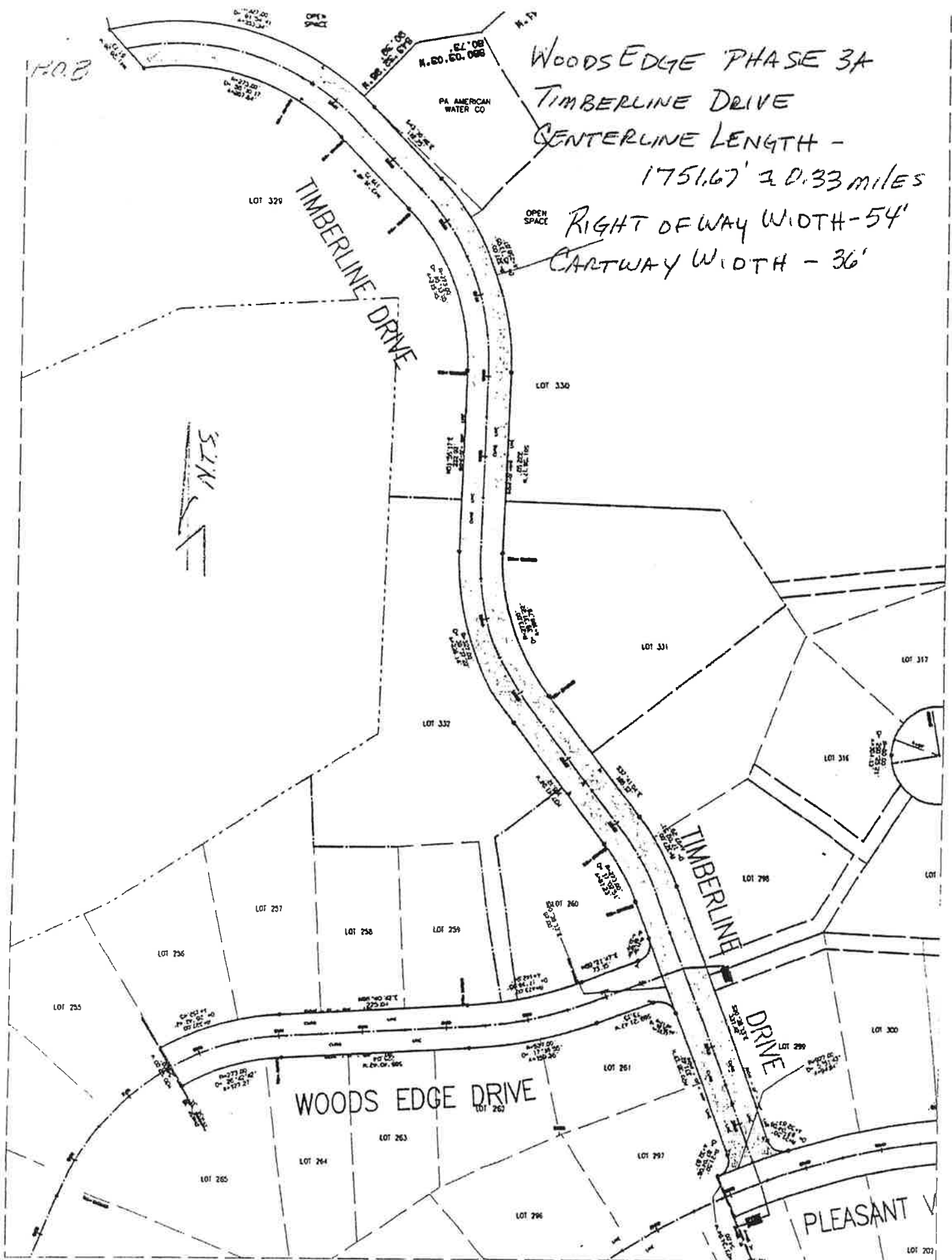


EXHIBIT "B"

Descriptions of Drainage Easements

DRAINAGE EASMENT DESCRIPTION
LOTS 331, 330, 318, 317

All that certain drainage easement, situate in Amity Township, Berks County, Pennsylvania as shown within lots 331, 330, 318 and 317 of the Final Plans of Woods Edge Phase 3A and being more fully bounded and described as follows to wit:

Beginning at a point on the eastern right of way line of Timberline Drive, said point being the common corner of lots 330 and 331;

Thence along lot 330, the two following courses and distances:

1. South 88 degrees 03 minutes 43 seconds East, 267.10' to a point;
2. South 34 degrees 12 minutes 23 seconds East, 107.57' to a point;

Thence through lot 330, North 84 degrees 10 minutes 07 seconds East, 253.51' to a point;

Thence through lots 330 and 318, South 05 degrees 49 minutes 53 seconds East, passing through the division line of lots 330 and 318, 1.51' from the next described corner, 20.00' to a point;

Thence through lots 318, 317 and 330, South 84 degrees 10 minutes 07 seconds West, passing through the division line of lots 318 and 317, 7.84' from the last described corner and the division line of lots 317 and 330, 227.16' from the next described corner, 242.71' to a point in line of lot 331;

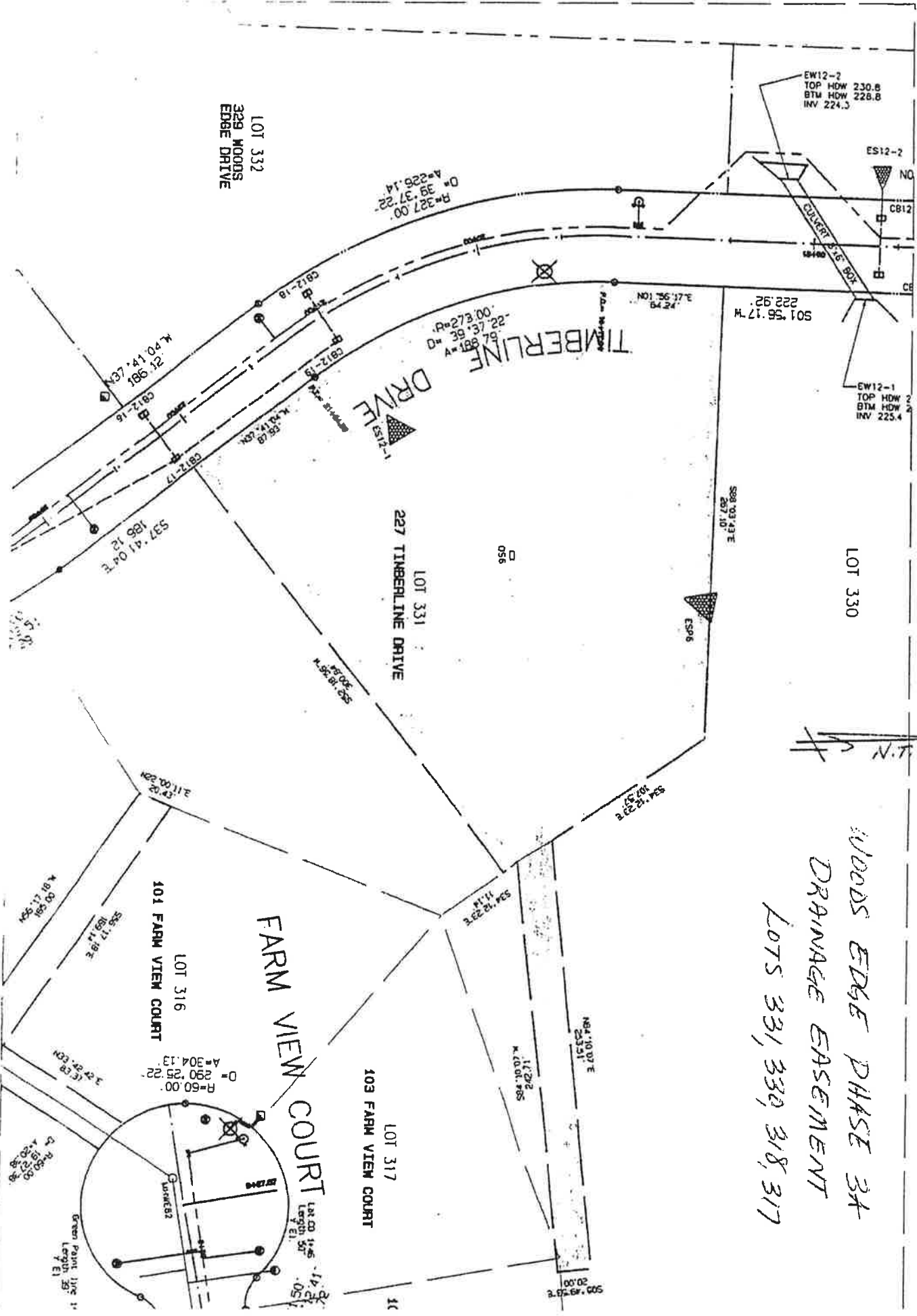
Thence along lot 331, South 34 degrees 12 minutes 23 seconds East, 11.14' to a point;

Thence through lot 331, South 52 degrees 18 minutes 56 seconds West, 300.84' to a point on the western right of way line of Timberline Drive;

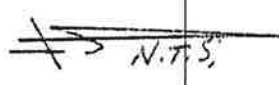
Thence along the western right of way line of Timberline Drive, the three following courses and distances;

1. North 37 degrees 41 minutes 04 seconds West, 87.93' to a point of curvature;
2. by a curve to the right, having a radius of 273.00', a central angle of 39 degrees 37 minutes 22 seconds and an arc length of 188.79' to a point of tangency;
3. North 01 degrees 56 minutes 17 seconds East, 64.24' to a point the place of BEGINNING.

CONTAINING; 75,650 Sq. Ft



WOODS EDGE PHASE 3A
 DRAINAGE EASEMENT
 LOTS 331, 330, 318, 317



DRAINAGE EASMENT DESCRIPTION
LOTS 325, 321, 320, 330

All that certain drainage easement, situate in Amity Township, Berks County, Pennsylvania as shown within lots 325, 321, 320 and 330 of the Final Plans of Woods Edge Phase 3A and being more fully bounded and described as follows to wit:

Beginning at a point on the western right of way line of Pleasant View Drive, said point being the northeast corner of lot 324;

Thence along lots 324 and 323, North 71 degrees 43 minutes 22 seconds West, 215.36' to a point a corner of lot 322;

Thence along lots 322 and 321, North 73 degrees 43 minutes 28 seconds West, 207.25' to a point, said point being 10.00' east of the northwestern corner of lot 321;

Thence through lot 321, South 16 degrees 16 minutes 32 seconds East, 204.18' to a point on the northern right of way line of Farm View Court;

Thence along the northern right of way line of Farm View Court, by a curve to the left, having an initial radius bearing, South 16 degrees 53 minutes 42 seconds West, a radius of 925.00', a central angle of 01 degrees 14 minutes 20 seconds and an arc length of 20.00', passing through the division corner of lots 321 and 320, 10.00' from the last described point, to a point;

Thence through lot 320, North 16 degrees 16 minutes 32 seconds East, 129.19' to a point in line of lot 330;

Thence along lot 320, North 78 degrees 45 minutes 25 seconds West, 175.06' to a point a corner of lot 319;

Thence along lot 319, North 88 degrees 30 minutes 55 seconds West, 173.81' to a point in line of lot 318 and a corner of lot 330;

Thence along lot 318 and through lot 330, North 03 degrees 15 minutes 58 seconds West, 143.56' to a point;

Thence through lot 330, the seven following courses and distances;

1. North 89 degrees 53 minutes 29 seconds East, 197.73' to a point;
2. North 07 degrees 37 minutes 42 seconds East, 40.63' to a point;
3. South 82 degrees 22 minutes 18 seconds East, 20.00' to a point;
4. South 07 degrees 37 minutes 42 seconds West, 39.83' to a point;
5. South 79 degrees 11 minutes 18 seconds East, 196.01' to a point;
6. South 00 degrees 54 minutes 08 seconds West, 62.21' to a point;
7. South 74 degrees 03 minutes 33 seconds East, 197.46' to a point in line of lot 325;

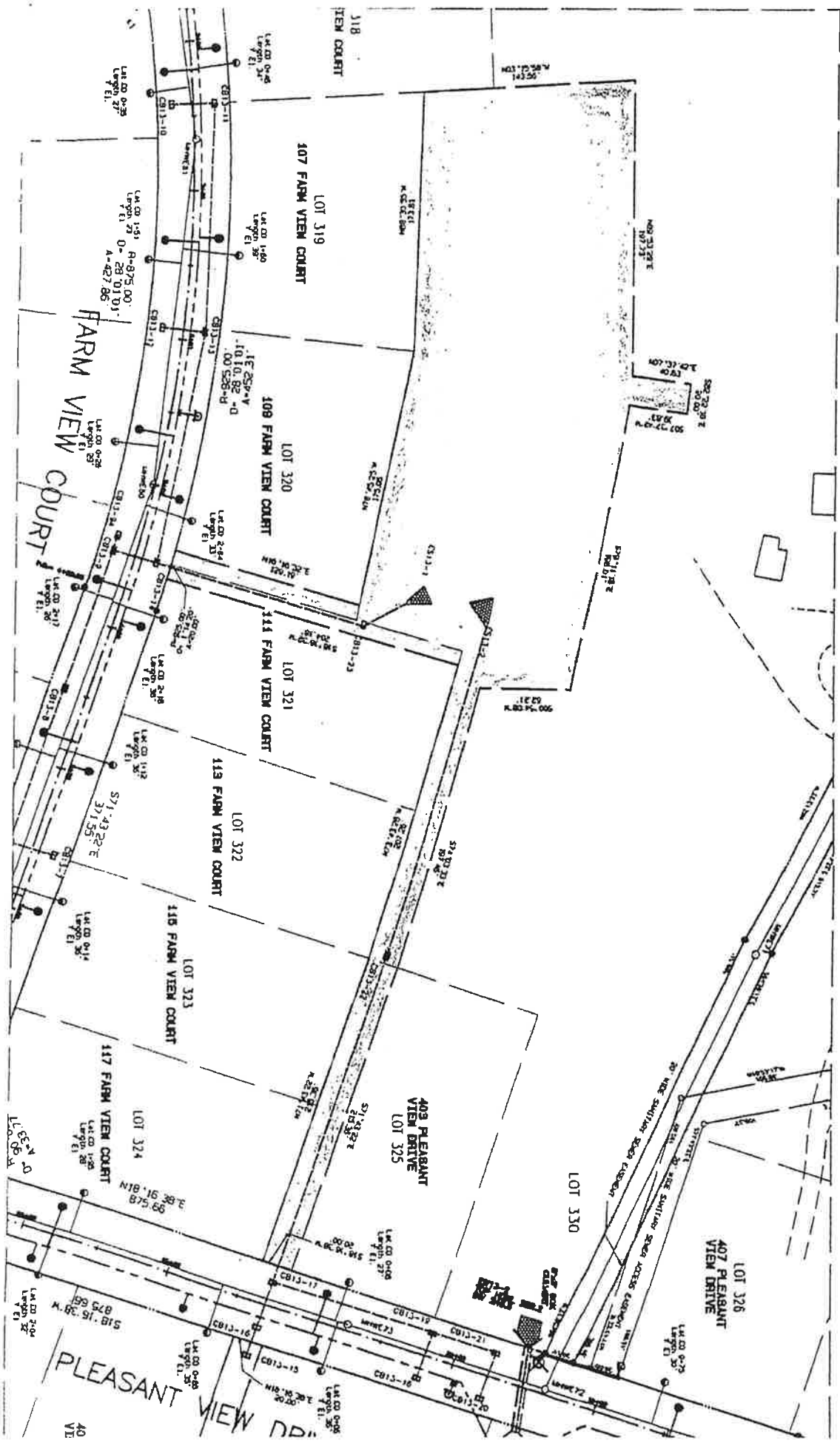
Thence through lot 325, South 71 degrees 43 minutes 22 seconds East, 215.36' to a point on the western right of way line of Pleasant View Drive;

Thence along the western right of way line of Pleasant View Drive, South 18 degrees 16 minutes 38 seconds West, 20.00' to a point, the place of BEGINNING.

CONTAINING; 70,474 Sq. Ft

WOODS EDGE PHASE 3A
DRAINAGE EASEMENT
LOTS 325, 321, 320, 330

N.T.S.



DRAINAGE EASMENT DESCRIPTION
LOT 299, 300, 301, 302, 303, 304 AND 305

All that certain drainage easement, 20' wide, situate in Amity Township, Berks County, Pennsylvania as shown within lots 299, 300, 301, 302, 303, 304 and 305 of the Final Plans of Woods Edge Phase 3A and being more fully bounded and described as follows to wit:

Beginning at a point on the eastern right of way line of Timberline Drive, said point being the southwest corner of lot 298;

Thence along lot 298, North 69 degrees 21 minutes 47 seconds East, 151.78' to a point a corner of lot 315;

Thence along lot 315, South 87 degrees 29 minutes 53 seconds East, 252.12' to a point a corner of lot 314

Thence along lots 314 and 313, South 89 degrees 20 minutes 43 seconds East, 123.49' to a point a corner of lot 313;

Thence along lots 313 and 312, South 80 degrees 16 minutes 21 seconds East, 123.67' to a point;

Thence along lots 312, 311 and 310, South 76 degrees 57 minutes 26 seconds East, 200.85' to a point a corner of lot 306;

Thence along lot 306, South 13 degrees 02 minutes 34 seconds West, 20.00' to a point in line of lots 306 and 305;

Thence through lots 305 and 304, North 76 degrees 57 minutes 26 seconds West, 200.27' to a point;

Thence through lots 304 and 303, passing the division line of lots 304 and 303, 0.50' from the last described corner, North 80 degrees 16 minutes 21 seconds West, 121.51' to a point;

Thence through lots 303, 302 and 301, passing through the division line of lots 303 and 302, 0.51' from the last described corner, and passing through the division line of lots 302 and 301, 0.39' from the next described corner, North 89 degrees 20 minutes 43 seconds West, 122.23' to a point;

Thence through lots 301, 300 and 299, North 87 degrees 29 minutes 53 seconds West, 248.35' to a point;

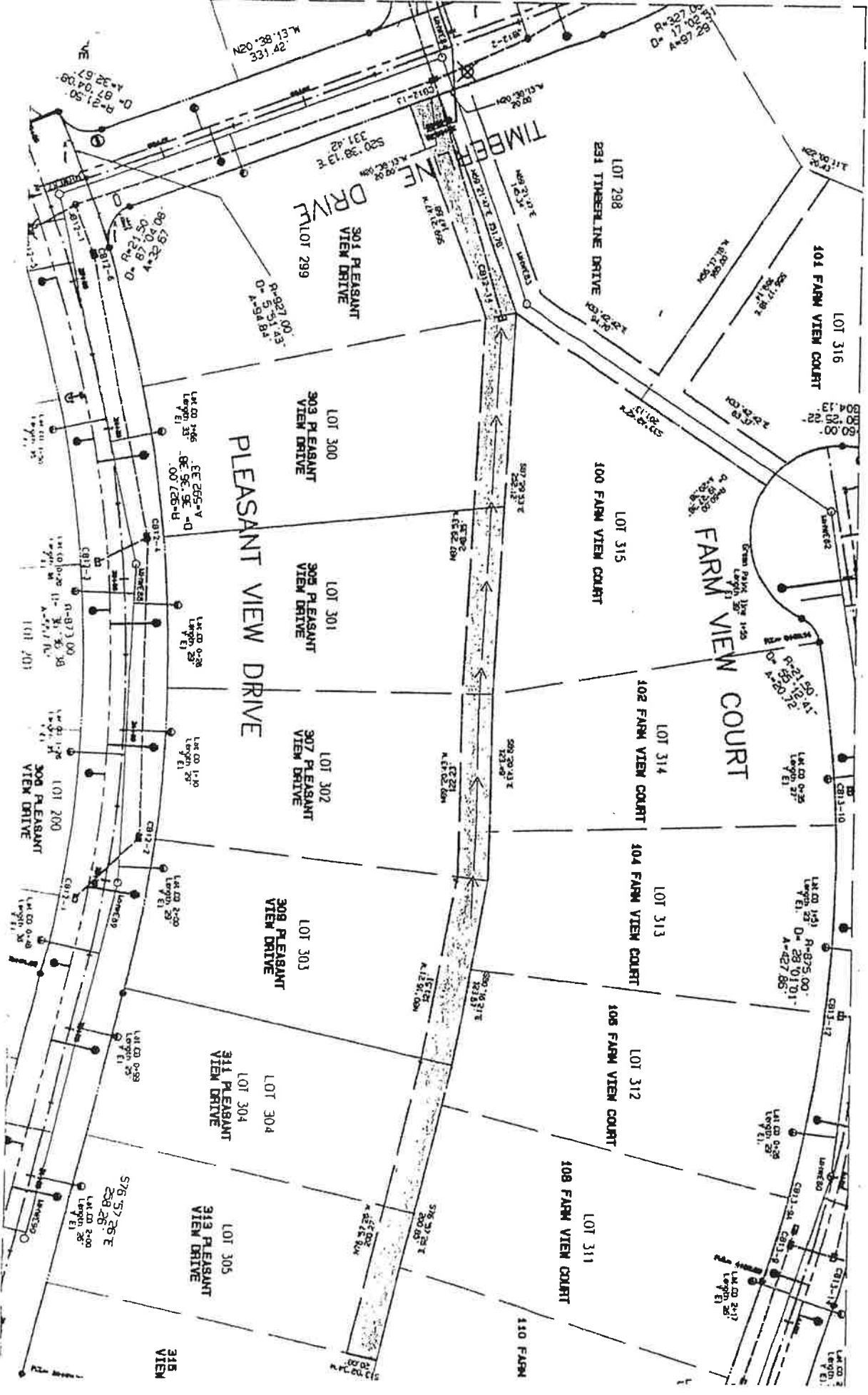
Thence through lot 299, South 69 degrees 21 minutes 47 seconds West, 147.68' to a point on the western right of way line of Timberline Drive;

Thence along the western right of way line of Timberline Drive, North 20 degrees 38 minutes 13 seconds West, 20.00' to a point, the place of BEGINNING.

CONTAINING; 16,919 Sq. Ft

WOODS EDGE PHASE 3A
DRAINAGE EASEMENT
LOTS 299 THROUGH 305

N.T.S.



DRAINAGE EASMENT DESCRIPTION
LOT 188

All that certain 20' wide drainage easement, situate in Amity Township, Berks County, Pennsylvania as shown within lot 188 of the Final Plans of Woods Edge Phase 3A and being more fully bounded and described as follows to wit:

Beginning at a point on the eastern right of way line of Pleasant View Drive, being the northeast corner of lot 189;

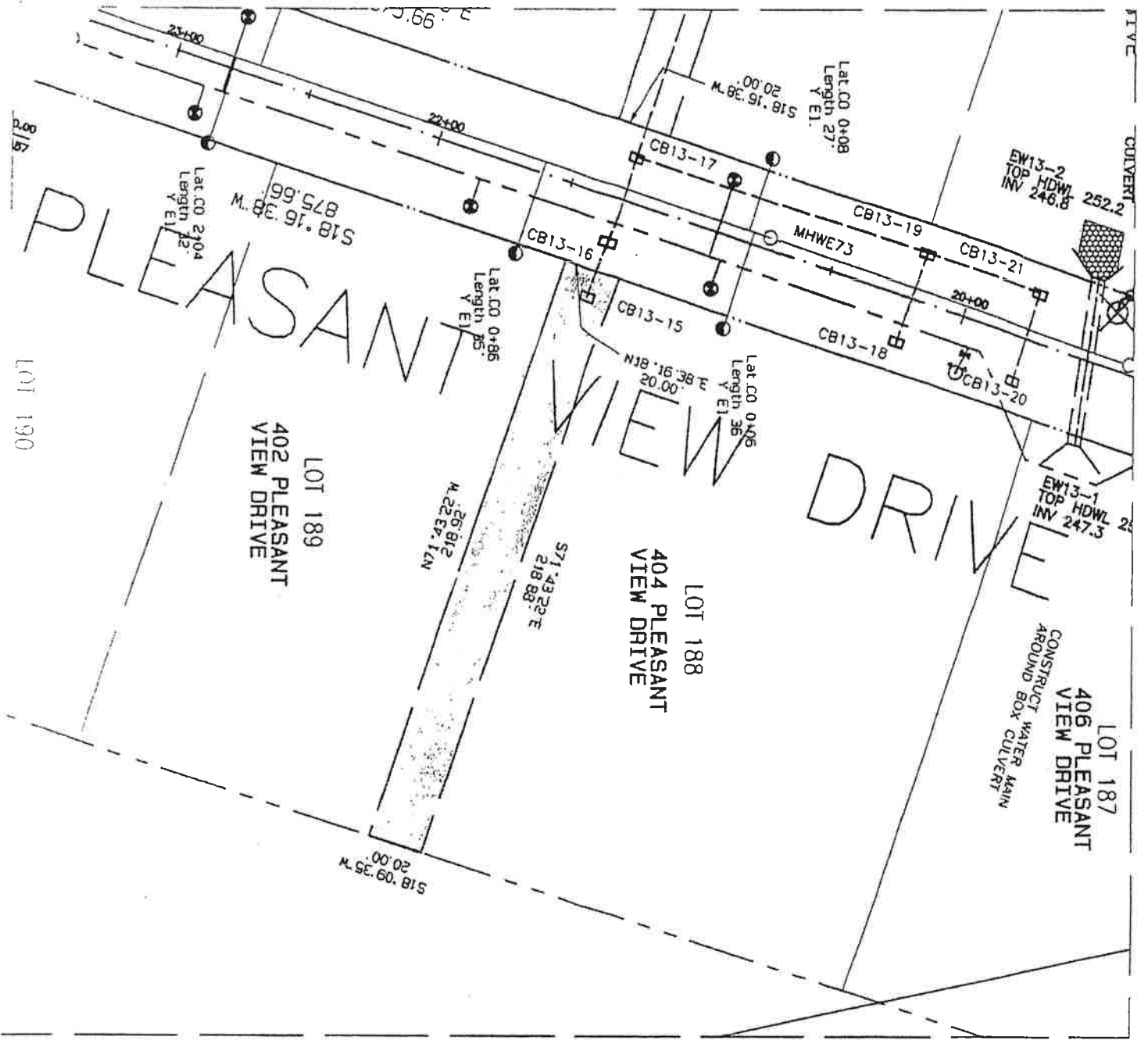
Thence along the eastern right of way line of Pleasant View Drive, North 18 degrees 16 minutes 38 seconds East, 20.00' to a point;

Thence through lot 188, South 71 degrees 43 minutes 22 seconds East, 218.88' to a point in line of Fancy Hill II, subdivision;

Thence along Fancy Hill II, South 18 degrees 09 minutes 35 seconds West, 20.00' to a point a corner of lot 189;

Thence along lot 189, North 71 degrees 43 minutes 22 seconds West, 218.92' to a point the place of BEGINNING.

CONTAINING; 4,378 Sq. Ft



N.T.S.

WOODS EDGE PHASE 3A
 DRAINAGE EASEMENT
 LOT 188

EXHIBIT "C"

Descriptions of Sewers Easements

SANITARY SEWER EASMENT DESCRIPTION
LOT 298 AND 316

All that certain sanitary sewer easement, 20' wide, situate in Amity Township, Berks County, Pennsylvania as shown within lots 298 and 316 of the Final Plans of Woods Edge Phase 3A and being more fully bounded and described as follows to wit:

Beginning at a point on the eastern right of way line of Timberline Drive, said point being the southwest corner of lot 298;

Thence along the eastern right of way line of Timberline Drive, North 20 degrees 38 minutes 13 seconds West, 20.00' to a point;

Thence through lot 298, North 69 degrees 21 minutes 47 seconds East, 145.34' to a point;

Thence through lot 298, North 33 degrees 42 minutes 42 seconds East, 94.70' to a point on the division line of lots 298 and 316;

Thence along lot 298, North 56 degrees 17 minutes 18 seconds West, 165.00' to a point, a corner of lot 331;

Thence along lot 331, North 22 degrees 00 minutes 11 seconds East, 20.43' to a point;

Thence through lot 316, South 56 degrees 17 minutes 18 seconds East, 169.14' to a point;

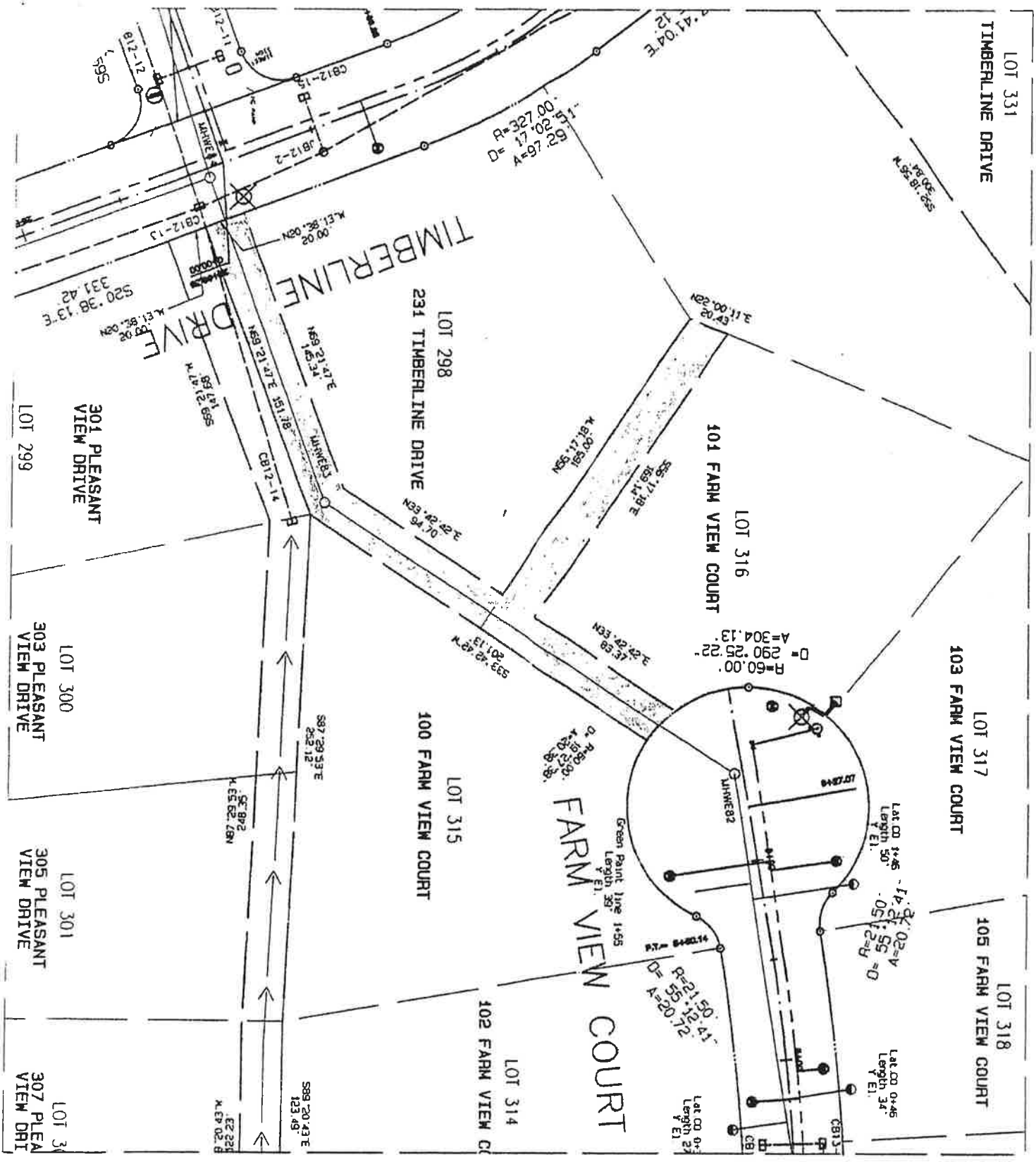
Thence through lot 316, North 33 degrees 42 minutes 42 seconds East, 83.37' to a point on the western right of way line of Farm View Court;

Thence along the western right of way line of Farm View Court, by a curve to the left, having an initial radius bearing, North 52 degrees 59 minutes 39 seconds East, a radius of 60.00', a central angle of 19 degrees 27 minutes 38 seconds and an arc length of 20.38' to a point, a corner of lot 315;

Thence along lot 315, South 33 degrees 42 minutes 42 seconds West, 201.13' to a point, a corner of lot 299;

Thence along lot 299, South 69 degrees 21 minutes 47 seconds West, 151.78' to a point the place of BEGINNING.

CONTAINING; 10,292 Sq. Ft



WOODS EDGE PHASE 3A
 SANITARY SEWER EASEMENT
 LOTS 298 & 316



SANITARY SEWER EASMENT DESCRIPTION
LOT 330 and OPEN SPACE

All that certain sanitary sewer easement (20' wide), situate in Amity Township, Berks County, Pennsylvania, as shown within lot 330 and Open Space Area of the Final Plans of Woods Edge Phase 3A and being more fully bounded and described as follows to wit:

Beginning at a point on the western right of way line of Pleasant View Drive, said point being the southern right of way line of a 20' wide sanitary sewer easement; and being South 18 degrees 16 minutes 38 seconds West, 50.73' from to common corner of lots 326 and 330;

Thence through lot 330, the two following courses and distances:

1. North 64 degrees 56 minutes 12 seconds West, 309.31' to a point;
2. North 62 degrees 13 minutes 22 seconds West, 831.11' to a point in line of the open space area of Woods Edge Phase 2A;

Thence through lands of Phase 2A open space area the 3 following courses and distances;

1. North 62 degrees 22 minutes 12 seconds West, 358.31' to a point a corner of an existing 20' wide sanitary sewer easement previously dedicated in phase 2A;
2. along the existing 20' wide sewer easement, North 56 degrees 19 minutes 04 seconds East, 22.75' to a point;
3. South 62 degrees 22 minutes 12 seconds East, 365.37' to a point in line of Lot 330;

Thence through lot 330, the two following courses and distances;

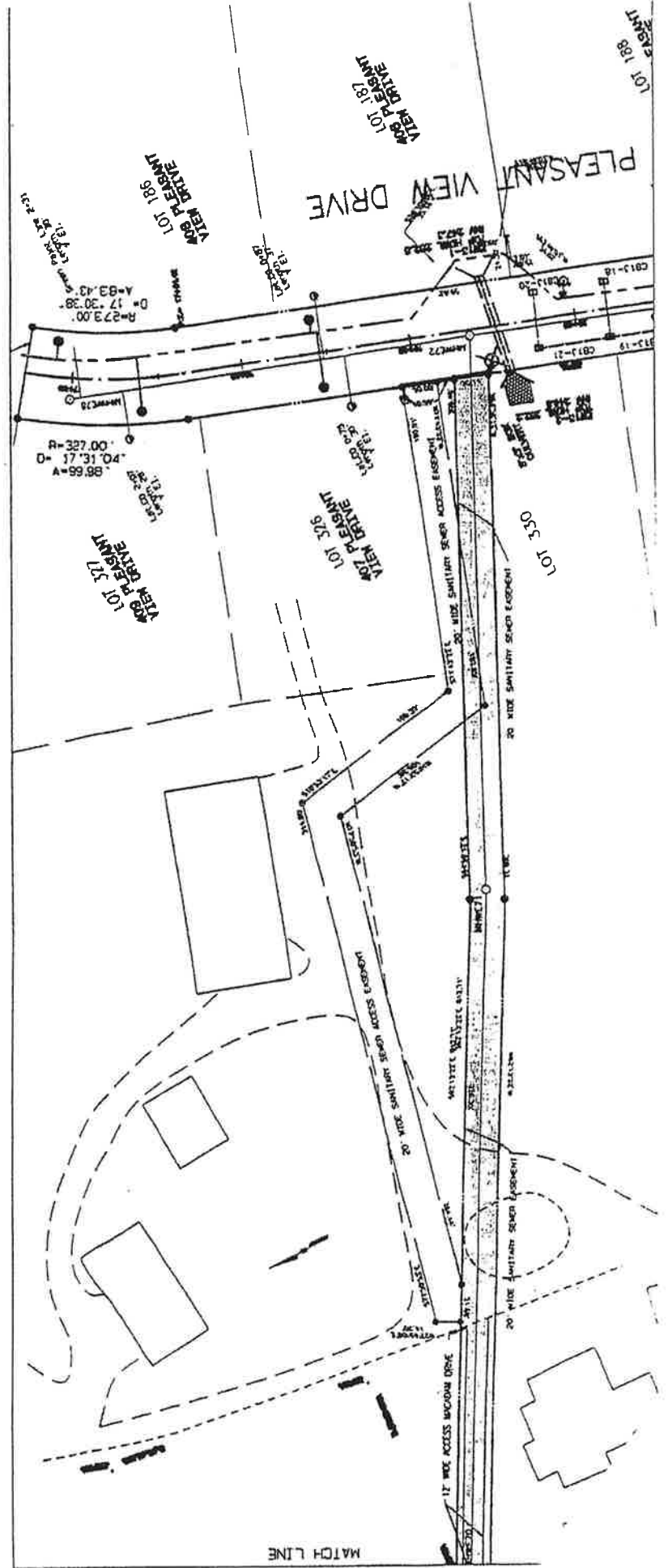
1. South 62 degrees 13 minutes 22 seconds East, 812.71' to a point;
2. South 64 degrees 56 minutes 12 seconds East, 306.46' to a point on the western right of way line of Pleasant View Drive;

Thence along the western right of way line of Pleasant View Drive, South 18 degrees 16 minutes 38 seconds West, 20.14' to a point the place of Beginning.

CONTAINING; 30,169 Sq. Ft

WOODS EDGE PHASE 3A

SANITARY SEWER EASEMENT
LOT 330

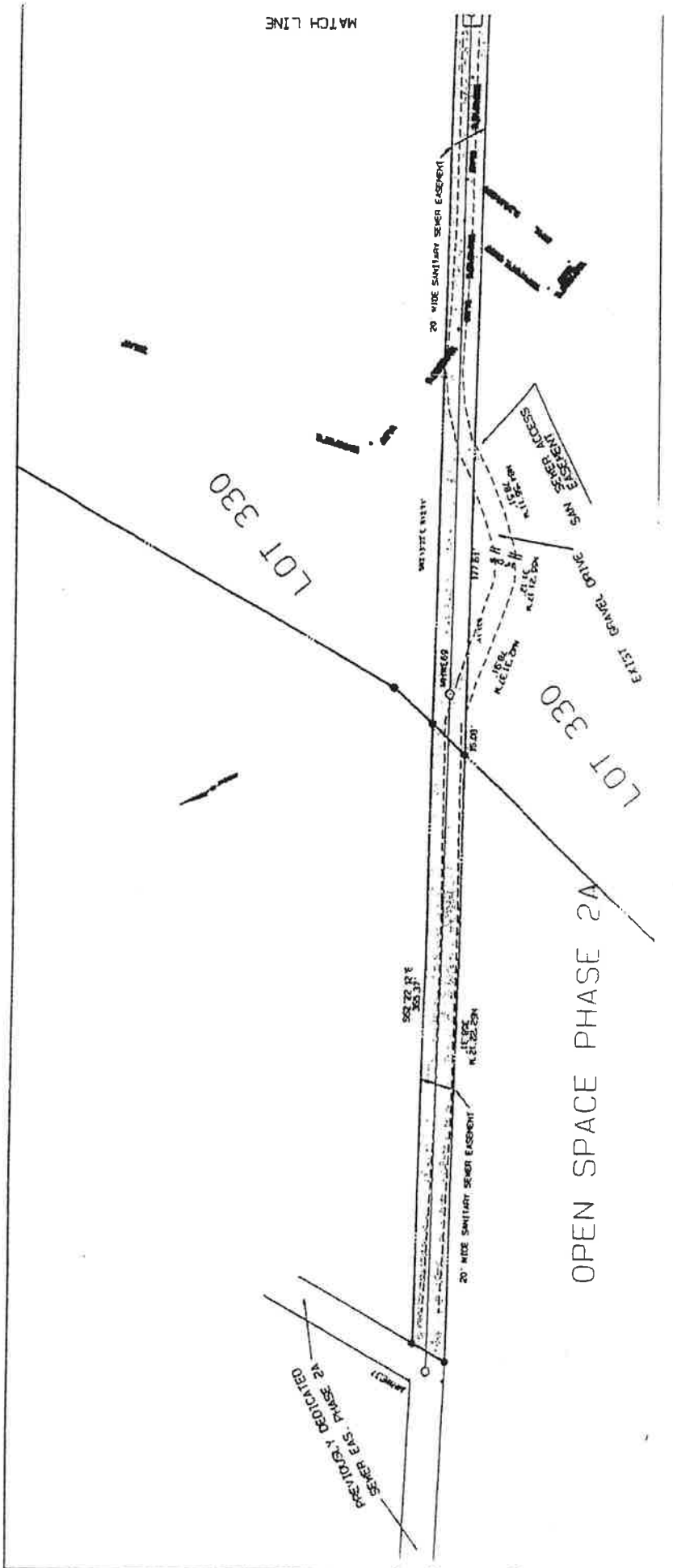


WOODS EDGE PHASE 3A

SANITARY SEWER EASEMENT

LOT 330

117.5'



OPEN SPACE PHASE 2A

SANITARY SEWER ACCESS EASEMENT DESCRIPTION
LOT 330

All that certain sanitary sewer access easement, situate in Amity Township, Berks County, Pennsylvania, within lot 330 of the Final Plans of Woods Edge Phase 3A and being more fully bounded and described as follows to wit:

Commencing from a point on the western right of way line of Pleasant View Drive, said point being the southern right of way line of a 20' wide sanitary sewer easement; and being South 18 degrees 16 minutes 38 seconds West, 50.73' from to common corner of lots 326 and 330;

Commencing from described point, along the southern side of a 20' wide sanitary sewer easement, and through lot 330, North 64 degrees 56 minutes 12 seconds West, 309.31' to a point and North 62 degrees 13 minutes 22 seconds West, 637.42' to a point the place of beginning;

Beginning at a point previously described above on the southern right of way line of a 20' wide sanitary sewer easement and through lot 330, North 84 degrees 56 minutes 11 seconds West, 78.51' to a point;

Thence through lot 330, North 55 degrees 21 minutes 17 seconds West, 31.12' to a point;

Thence through lot 330, North 42 degrees 31 minutes 37 seconds West, 78.91' to a point on the southern side of a 20' wide sanitary sewer easement;

Thence along the southern side of said sewer easement, South 62 degrees 13 minutes 22 seconds East, 177.61' to a point the place of Beginning.

CONTAINING; 2,964 Sq. Ft

SANITARY SEWER ACCESS EASMENT DESCRIPTION
LOT 330

All that certain sanitary sewer access easement, situate in Amity Township, Berks County, Pennsylvania as shown within lot 330 of the Final Plans of Woods Edge Phase 3A and being more fully bounded and described as follows to wit:

Beginning at a point on the western right of way line of Pleasant View Drive, said point being the northeast corner of lot 326;

Thence along the western right of way line of Pleasant View Drive, South 18 degrees 16 minutes 38 seconds West, 20.00' to a point;

Thence through lot 330, the 8 following courses and distances:

1. North 71 degrees 43 minutes 22 seconds West, 192.65' to a point;
2. North 10 degrees 53 minutes 17 seconds West, 106.88' to a point;
3. North 77 degrees 50 minutes 53 seconds West, 284.44' to a point on the northern side of a 20' sanitary sewer easement;
4. along the northern side of a 20' wide sewer easement, North 62 degrees 13 minutes 22 seconds West, 21.69' to a point;
5. North 27 degrees 45 minutes 06 seconds East, 14.70' to a point;
6. South 77 degrees 50 minutes 53 seconds East, 314.60' to a point;
7. South 10 degrees 53 minutes 17 seconds East, 108.37' to a point;
8. South 71 degrees 43 minutes 22 seconds East, 180.91' to a point the place of

Beginning.

CONTAINING; 12,038 Sq. Ft

WOODS EDGE PHASE 3A
 SANITARY SEWER ACCESS EASEMENT
 LOT 330

W.M.S.

