

ALSACE

LOWER ALSACE

OLEY

ST. LAWRENCE

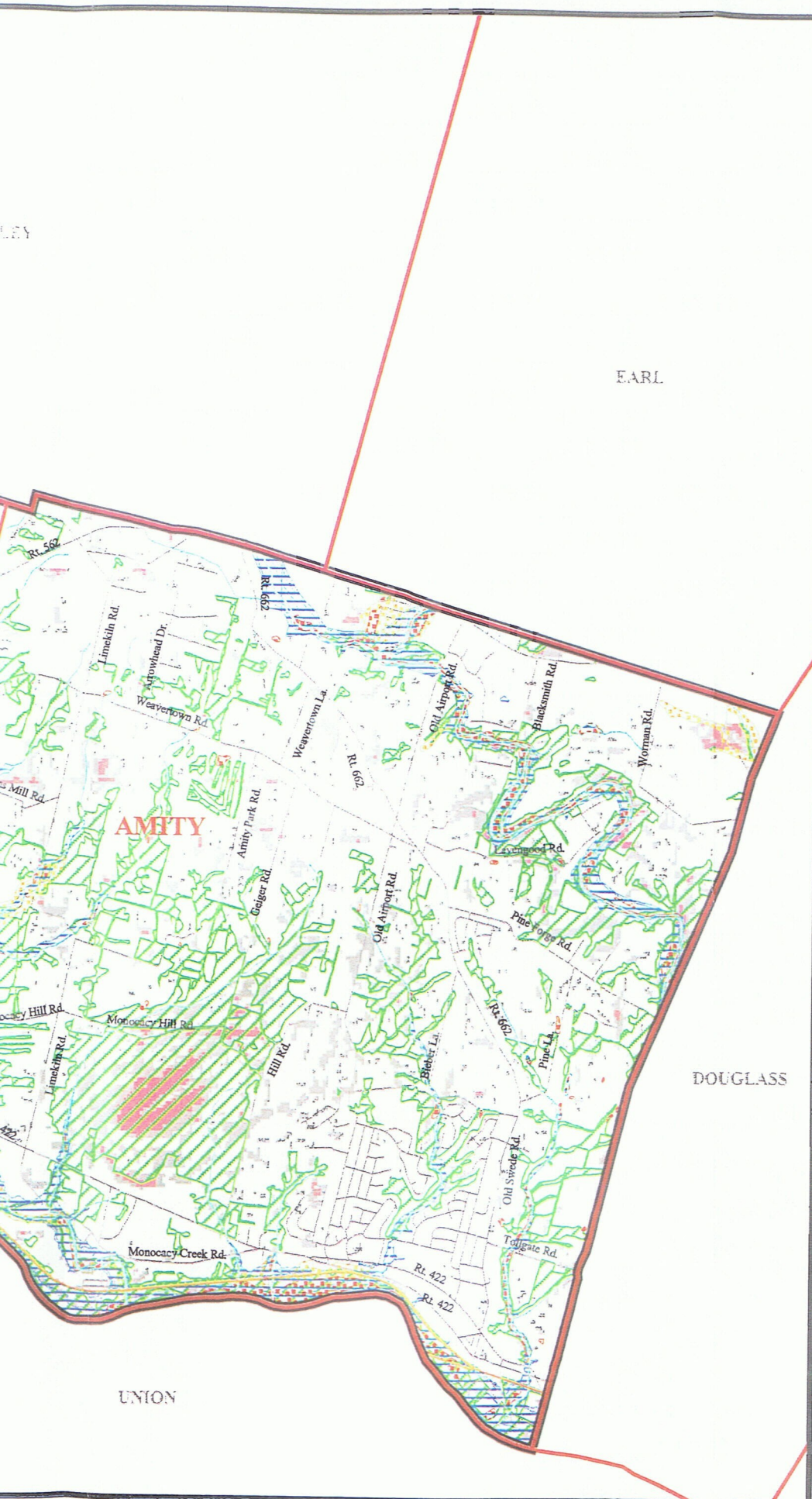
MT PENN

EXETER

ROBESON

BIRDSBORO

*Natural Resources Map,  
The Joint Comprehensive Plan  
For St. Lawrence, Exeter and Amity  
Berks County*



- Railroads
- Streams
- Floodplains
- Wetlands
- Hydric Soils
- Woodland
- Slope
  - 15% - 25%
  - > 25%



Data source: Berks County GIS and SSM



**Spotts, Stevens and McCoy, Inc.**  
1047 N. Park Rd.  
Reading, PA 19610-0307  
Tel: 610-621-2000 Fax: 610-376-6950

02/28/02

g:\projects\w6000\w6128\w6128004\projects\w6128\_004.apr